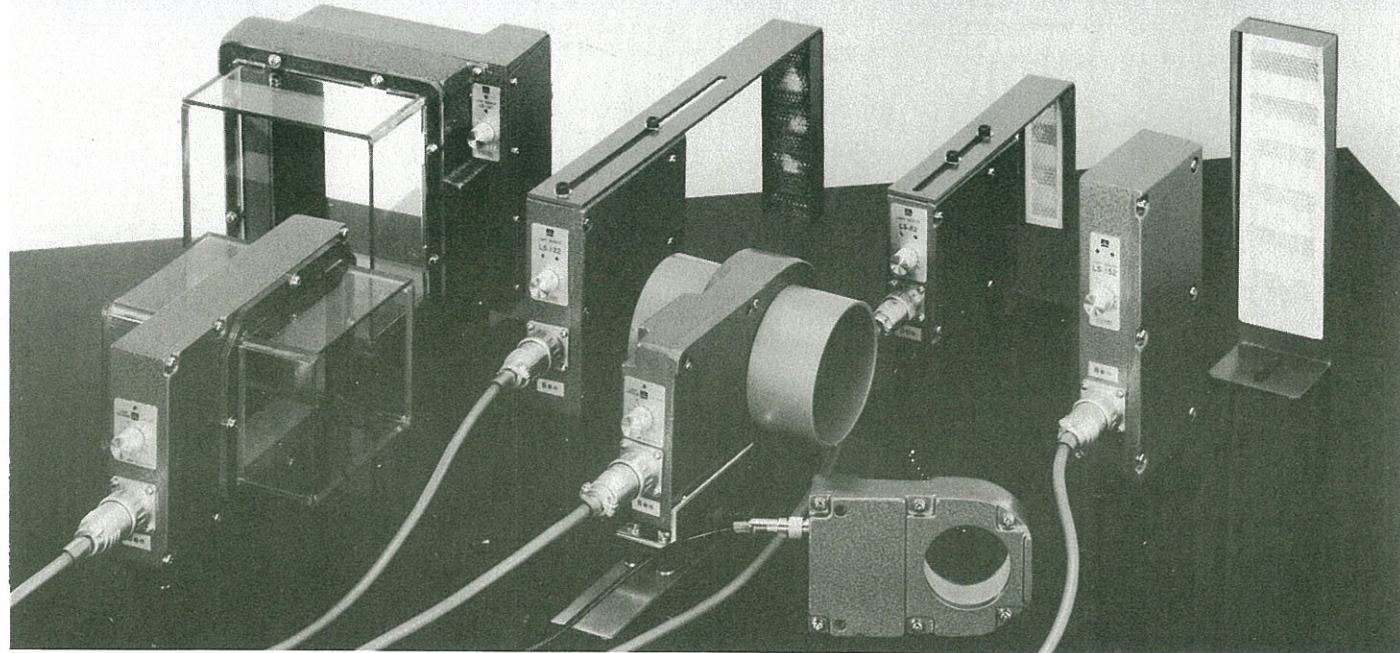


MISEJECT DETECTING SENSOR

Reliant Technology
SUGIYAMA ELECTRIC SYSTEM INC.

WIDE VARIATION MATCHING ALL YOUR WORK NEEDS



Light sensors and loop sensors are used for detecting the air eject of products in automatic stamping. Their complete features are exerted in combination with our product, Electronic Type Error Detecting Device "SAFETY DEVICE PS-601/PS-602".

LIGHT SENSOR

- Small space for installing this light sensor is enough due to compact size thereof.
- All products interrupting light, such as metals, plastics, etc., can be detected by this light sensor.
- All parts including light source in this light sensor are made in solid state and even lamps cannot be burnt out.
- Products passing by very quickly as well as those passing by slowly can be detected in all the same way.
- Operation stability of this light sensor can be maintained for a long period of time with aid of a strong body made of aluminum alloy and an oil seal.

LOOP SENSOR

- As this loop sensor is not influenced by water, oil, dust, etc., it may be most suitable to such places where a light sensor could not be used due to oil contamination.
- The passing velocity of things to be detected is O.K., quickly or slowly.
- There are usually troubles in adjusting air eject because of the difficulties in ejecting work within the detecting area in case of using optical type sensors. In case of using this loop sensor, however, air flow can be improved by mounting a hood and the air blast for work is stabilized. As a result, the precision in detection has been remarkably improved.

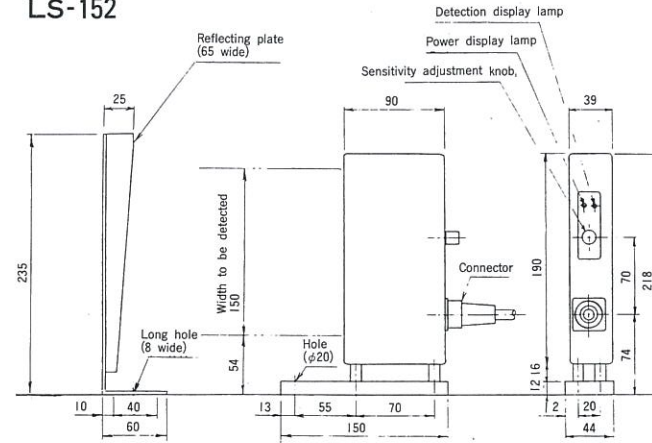
FEATURES & SPECIFICATIONS

	LIGHT SENSOR			LOOP SENSOR				COMMENTS
	LS-152	LS-122	LS-82	LS-150	LS-120	LS-85	LS-50	
DETECTABLE MINIMUM SIZE	4mm spheres*1	3mm spheres	2mm spheres	1.0t×30φ*2	0.5t×10φ*2	0.5t×6φ*2	0.3t×3φ*2	*1 Less than 300mm for reflector increment *2 Variable depending on materials, shapes, metal plating, etc.
MATERIAL TO BE DETECTED	All substances interrupting light			Iron				
PASSAGE HOLE SIZE FOR THE MATERIAL TO BE DETECTED				150×150	120×100	85φ	50φ	
(SAME AS ABOVE) WHEN PVC PIPES ARE USED				137×137	108×88	77φ		
EXTERNAL SENSITIVITY BUCKLING DISTANCE				Less than 70mm*3	Less than 52mm*3	Less than 40mm*3	Less than 25mm*3	*3 Maximum sensitivity and on the central axis of a passage hole
MAXIMUM INCREMENT OF REFLECTOR	1m							
SENSITIVITY ADJUSTMENT	Dial type			Dial type		Fixed in half		
OPERATION SWITCHING OF ERROR DETECTOR	Operation B			Operation B				
POWER VOLTAGE	DC12V±0.5V			DC12V±0.5V				
POWER CONSUMPTION	Less than 210mA	Less than 150mA		Less than 50mA		Less than 40mA		
OUTPUT CURRENT	Less than 50mA			Less than 50mA				
OPERATING TEMPERATURE	0°C~40°C			0°C~40°C				Ambient temperature

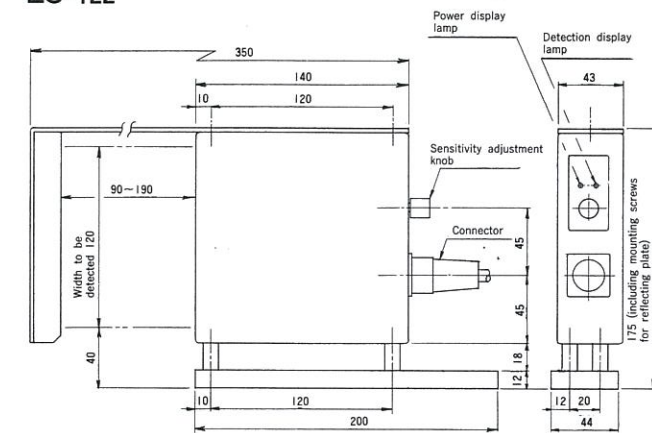
*For further improvement, the above description may be changed without notice.

LIGHT SENSOR

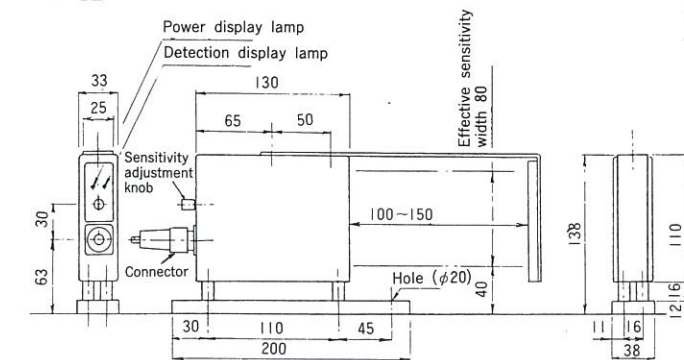
LS-152



LS-122

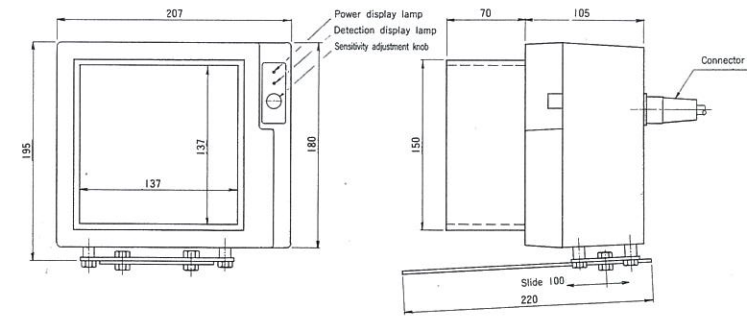


LS-82

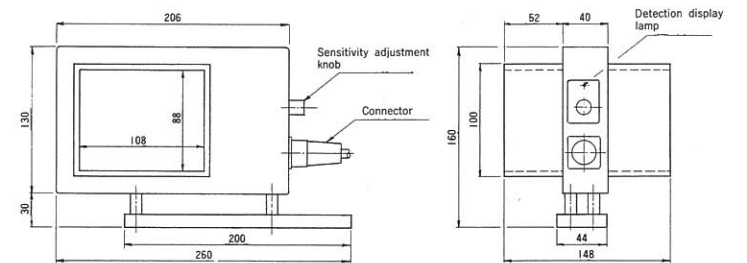


LOOP SENSOR

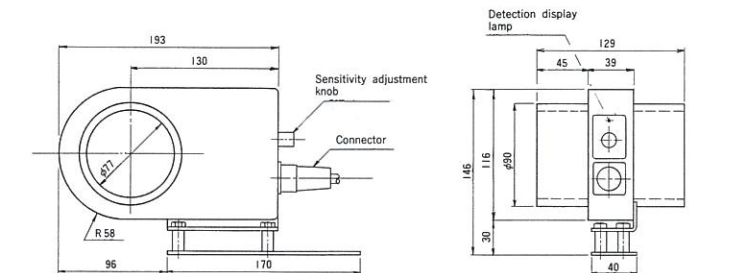
LS-150



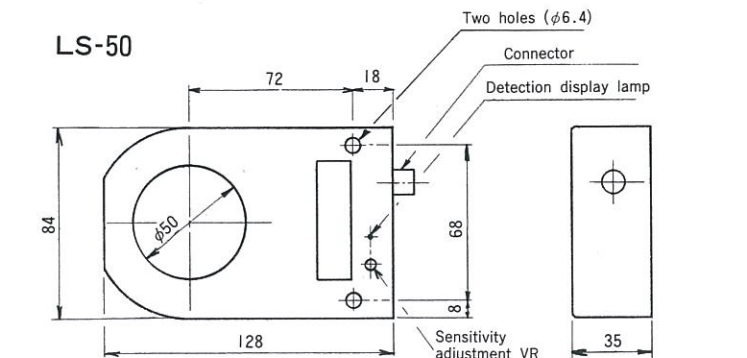
LS-120



LS-85



LS-50



Reliant Technology
SUGIYAMA ELECTRIC SYSTEM INC.

1-30 Kamitakabata Nakagawaku Nagoya 454 JAPAN
TEL (052)363-0501 FAX (052)351-7585