

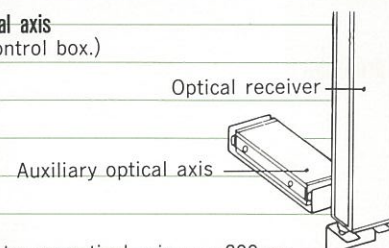
Compact device with complete safety built-in Presence Sensing Device for Press **NEW TYPE** **MODEL RPL-II**

FEATURES:

- ★ Employed 40 mm pitch optical axis makes positive protection.
- ★ Bypass (up-stroke muting) indication lamp clearly displays the invalidity condition when the slide is raising.
- ★ The operating direction of the control box may be shifted 90° thus permitting installation of the operation panel in any location.
- ★ A number of optical receiver/projectors are available with a monitoring range of every 160 mm. You can select a device that at best suits your particular press machine.
- ★ The compact design requires minimum installation space and thus allows smooth press operation.
- ★ The modulated light system is almost immune to the ambient light.
- ※ The inspection terminal (optional) facilitates maintenance and inspection.
- ※ An auxiliary optical axis (optional) provides dual safety monitoring in the horizontal and vertical directions of optical axes, and thus offers safer press operation.

OPTIONS FOR GREATER SAFETY (Refer to the Option Guide for details.)

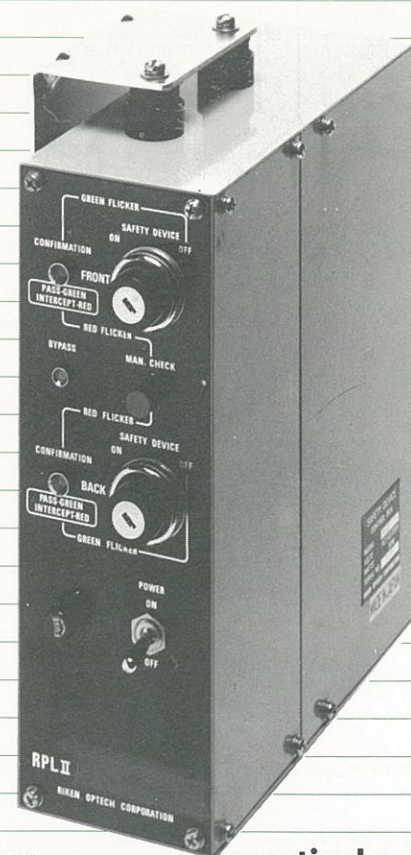
Auxiliary optical axis
(Common control box.)



Clearance between optical axis 200mm
Number of optical axis 2

- **RPL-II model with 8-to 56-throw optical axes are available in the unit of every 4-optical-axes.**
- **Each device comes in a one-side type or a two-sides type configuration.**

Design and specifications are subject to change for improvement without notice.



A design concept for greater safety Introducing **MODEL RPL-II**

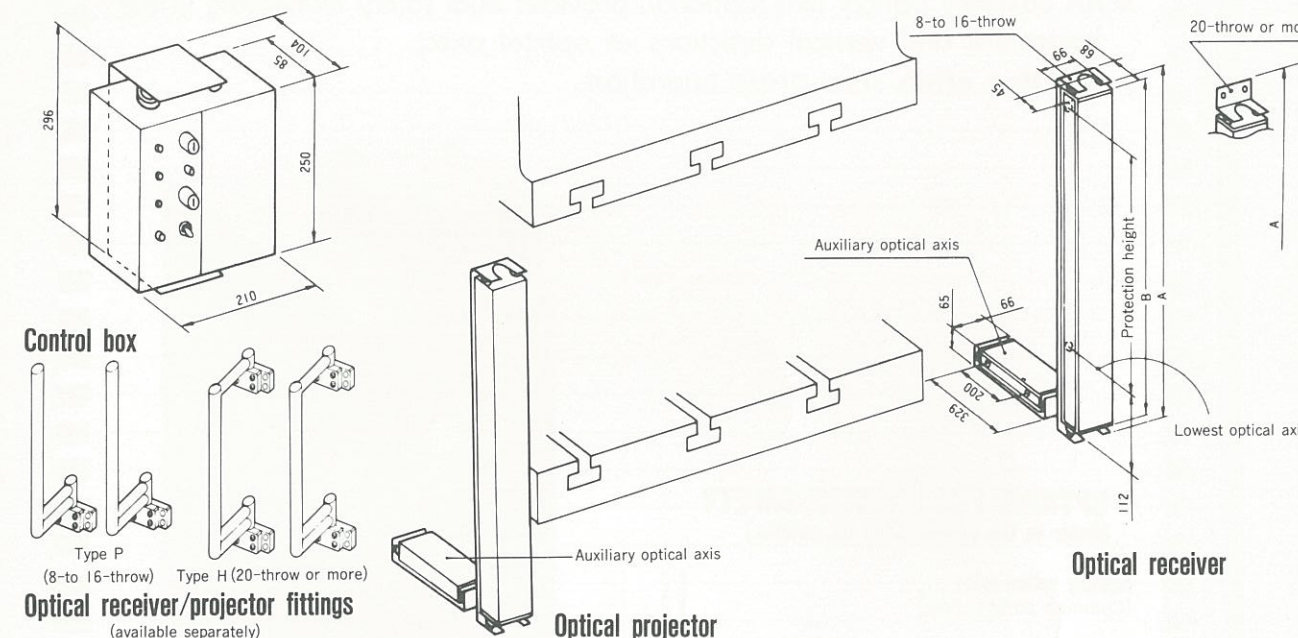
Specifications

Supply Voltage	AC100V or AC200V	Response Time	Less than 15ms (RPLII-8~RPLII-20)
Power Supply Frequency	50/60Hz		Less than 20ms (RPLII-24~RPLII-32)
Variation in Supply Voltage	± 10%		Less than 25ms (RPLII-36~RPLII-56)
Output Contacts	1A, 1B (independent)	Projecting Elements	Infrared LED
Output Contact Rating	AC230V, 7A (cosφ=1)	Light Receiving Elements	Photo transistors
Power Requirement	30W	Optical axis Pitch	40mm
Ambient Temperature	-5°C~50°C	Applicable Type	The press with the emergency stop mechanism
Effective Distance	0.3m~1.3m		

Light sensor protection heights and other dimensions

(Unit: mm)

Light sensor	RPLII-8-throw	RPLII-12-throw	RPLII-16-throw	RPLII-20-throw	RPLII-24-throw	RPLII-28-throw	RPLII-32-throw
Protection height	280	440	600	760	920	1080	1240
A	464	624	784	944	1104	1264	1424
B	425	585	745	905	1065	1225	1385
Optical axis pitch	40	40	40	40	40	40	40



For further information, contact our technical division at the following address:

RIKEN OPTECH CORPORATION

2-6-9, HIGASHI OHI, SHINAGAWA-KU, TOKYO, 140 JAPAN
TEL: 81-3-3474-8602 FAX: 81-3-3450-5295

Distributor: