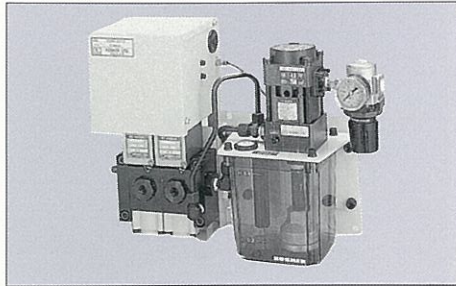
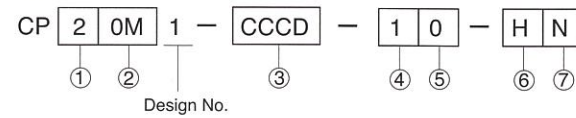


MODEL CP UNIT

CP is a compact hydraulic power unit generating 24.5MPa. It includes an AB pump, hydraulic valves, and pressure switches.



MODEL CODE



- Tank capacity code
2 : 2ℓ tank(H.L.-L.L.=1.1ℓ)
5 : 5ℓ tank(H.L.-L.L.=3.1ℓ)
- Normal pressure code*1
0M : 24.5 MPa
Supply air pressure 0.45 MPa, without temperature compensating valve
0N : 24.5 MPa
Supply air pressure 0.41 MPa, with temperature compensating valve
- Circuit symbol
C : Normal open circuit for clamp (single solenoid valve)
D : Normal close circuit for die lifter (single solenoid valve)
R : Pressure compensating valve (micro flow relief valve)
U : Double solenoid circuit for clamp
V : Double solenoid circuit for die lifter
G : Normal open circuit for clamp*2
H : Normal close circuit for die lifter*2
*2 When the U circuit is commonly used
- Control voltage
1 : AC100V
2 : AC200V
3 : AC110V
4 : AC220V
5 : DC 24V
- Working Fluid code
0 : General working fluid (Refer to working fluid list in p24) ... Standard
S : Silicone oil
G : Water-Glycol (The tank to be made of steel)
- Options
Blank : Standard
H : With piping seat
G : With primary pressure gauge
- Gauge unit
Blank : Standard MPa
N : PSI unit and NPT piping exclusively used in USA
P : PSI unit and Rc piping exclusively used in USA

Note *1
Operating Pressure Code is classified according to the usage of the temperature relief valve.

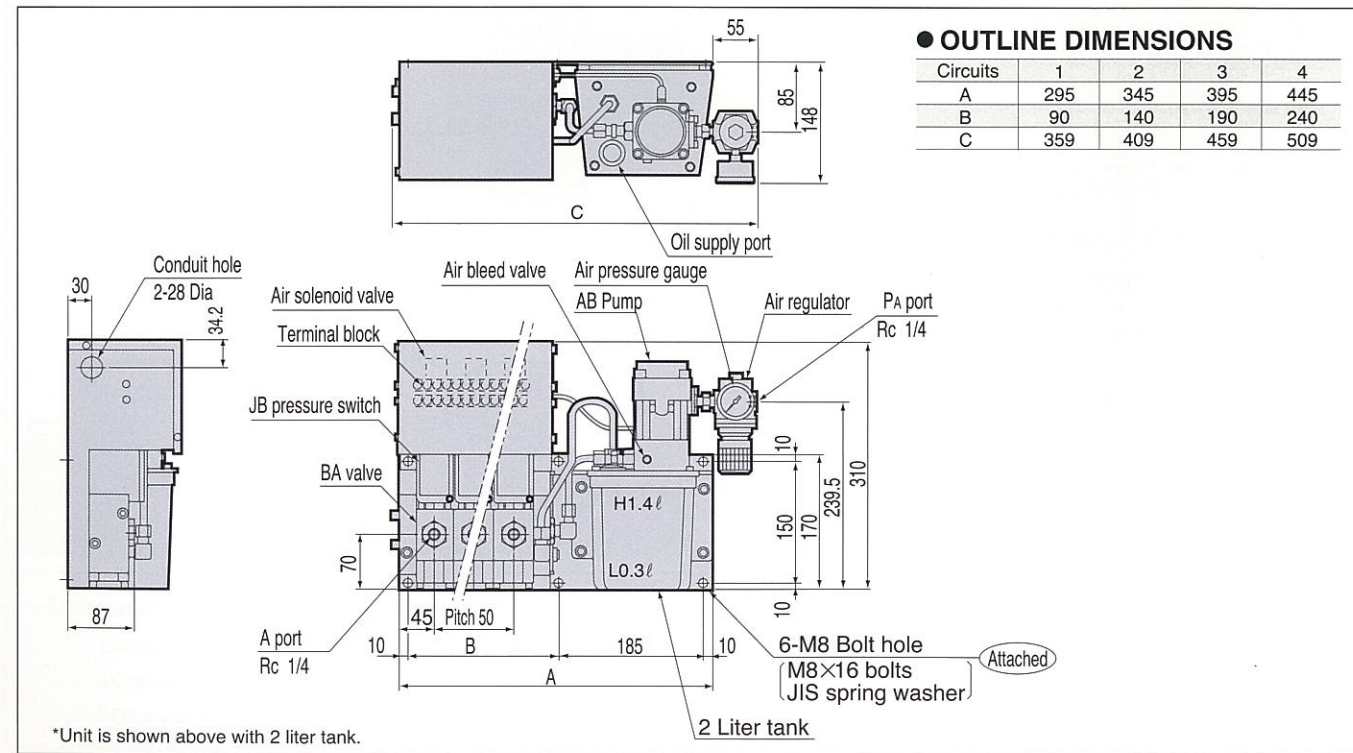
SPECIFICATIONS

Model		CP20M1-□□□-10	CP20N1-□R□R□R-10
Working Pressure	(MPa)	24.5	
Rated Pressure	(MPa)	36.8	
Tank Capacity	(cm ³)	2 : 2000 5 : 5000	
Working Temperature		0 - 70°C	
Working Fluid		2.5 min / time : 20 times / day	
Main Components			
Pump	Model	AB7000-0	
	Set Discharge Pressure	24.5MPa	22.5MPa
	Discharge Volume Under No Load	1.36 ℓ/min	1.30 ℓ/min
Suction Filter	Set Air Pressure	0.45MPa	0.41MPa
	Model	JF1030	
Valve	Filter Element	174 μm (100mesh)	
	Model	BA5011-0	BA5011 0/BA5R11-0
Pump	Orifice	12.6mm (P→A) 52.8mm (A→R)	
	Operating Pressure Ratio	1 / 62.5 (Pneumatic/Hydraulic)	
	Clamp Circuit	JB2800-M0	
	Purpose/Set Pressure	Check inc. pressure/INC. 17.6MPa	
Suction Filter	Lifter Circuit	JB1000-M0	
	Purpose/Set Pressure	Check dec. pressure/DEC. 2.94MPa	
Suction Filter	Model	BR5N11-0	
	Set Pressure	24.5 ^{+2.45} MPa	

- For other fluids, consult us.
- If fluid viscosity is higher, action will be slower.
- Action at low temperature will be slower as fluid viscosity is higher.

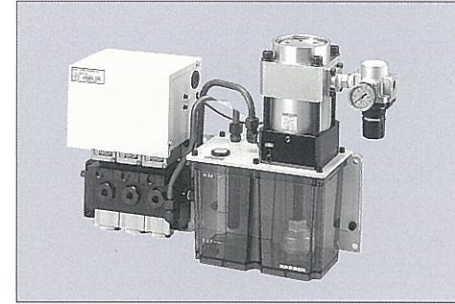
- Auto drain type air filter should be used when air supply has much moisture or air supply is at the end of supply line.
- If hydraulic pressure gauge is used in the circuit, install damper or use gauge containing grease.
- Leave enough space under unit to remove tank in case oil or suction filter should be changed.

OUTLINE DIMENSIONS

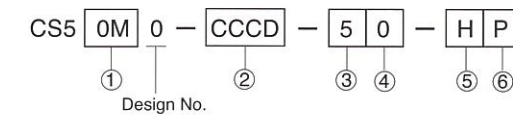


MODEL CS UNIT

The CS unit is a hydraulic unit equipped with the AC pump used for the system requiring a flow rate higher than that of the CP unit.



MODEL CODE



NON STOCKING ITEM

SPECIFICATIONS

Model		CS50M0-□□□-□□	CS50N0-□R□R□R-□□
Working Pressure	(MPa)	24.5	
Rated Pressure	(MPa)	36.8	
Tank Capacity	(cm ³)	5000	
Working Temperature		0 - 70°C	
Frequency of Use		2.5 min / time : 20 times / day	
Main Components			
Pump	Model	AC7000	
	Set Discharge Pressure	24.5MPa	22.5MPa
	Discharge Volume under No Load	2.79 ℓ/min	2.70 ℓ/min
Suction Filter	Set Air Pressure	0.47MPa	0.44MPa
	Model	JF1030	
Valve	Filter Element	174 μm (100 mesh)	
	Model	BA5011-0	BA5011-0/BA5R11-0
Pressure	Orifice	12.6mm ² (P→A) 52.8mm ² (A→R)	
	Operating Pressure Ratio	1/62.5	
	Clamp Circuit	JB2800-M0	
	Purpose/Set Pressure	Check inc. pressure/INC. 17.6MPa	
Switch	Lifter Circuit	JB1000-M0	
	Purpose/Set Pressure	Check dec. pressure/DEC. 2.94MPa	
Relief Valve	Model	BR5N11-0	
	Set Pressure	24.5 ^{+2.45} MPa	

- For other fluids, consult us.
- If fluid viscosity is higher, action will be slower.
- Action at low temperature will be slower as fluid viscosity is higher.

- Auto drain type air filter should be used when air supply has moisture.
- If hydraulic pressure gauge is used in the circuit, install damper or use gauge containing grease.
- Leave enough space under unit to remove tank in case oil or suction filter should be changed.

- Normal pressure code
0M : 24.5 MPa
Supply air pressure 0.47 MPa, without temperature compensating valve
0N : 24.5 MPa
Supply air pressure 0.44 MPa, with temperature compensating valve
 - Circuit symbol
C : Normal open circuit for clamp (single solenoid valve)
D : Normal close circuit for die lifter (single solenoid valve)
R : Pressure compensating valve (micro flow relief valve)
U : Double solenoid circuit for clamp
V : Double solenoid circuit for die lifter
G : Normal open circuit for clamp*2
H : Normal close circuit for die lifter*2
*2 When the U circuit is commonly used
 - Control voltage
1 : AC100V
2 : AC200V
3 : AC110V
4 : AC220V
5 : DC 24V
 - Working Fluid
0 : General working fluid (Refer to working fluid list in p24) ... Standard
S : Silicone oil
G : Water-Glycol (The tank to be made of steel)
 - Options
Blank : Standard
H : With piping seat
G : With primary pressure gauge
 - Gauge unit
Blank : Standard MPa
N : PSI unit and NPT piping exclusively used in USA
P : PSI unit and Rc piping exclusively used in USA
- Note *1
Operating Pressure Code is classified according to the usage of the temperature relief valve.

OUTLINE DIMENSIONS

