

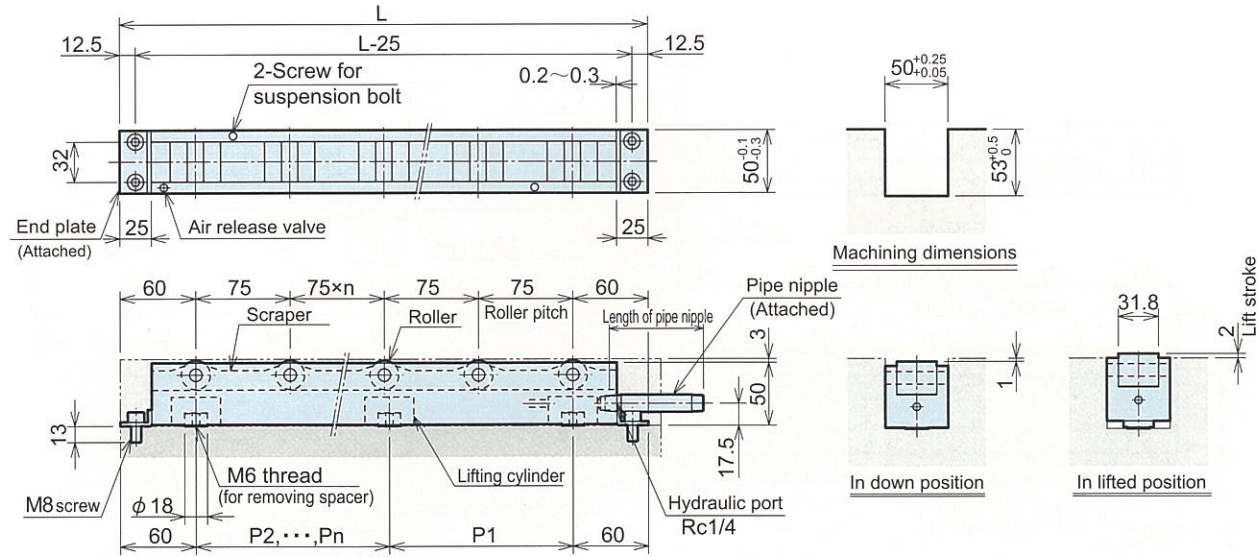
# Hydraulic die lifter

Hydraulic lifting type

# model RA0500

## Outline Dimensions

● RA0500-□



## Dimensions

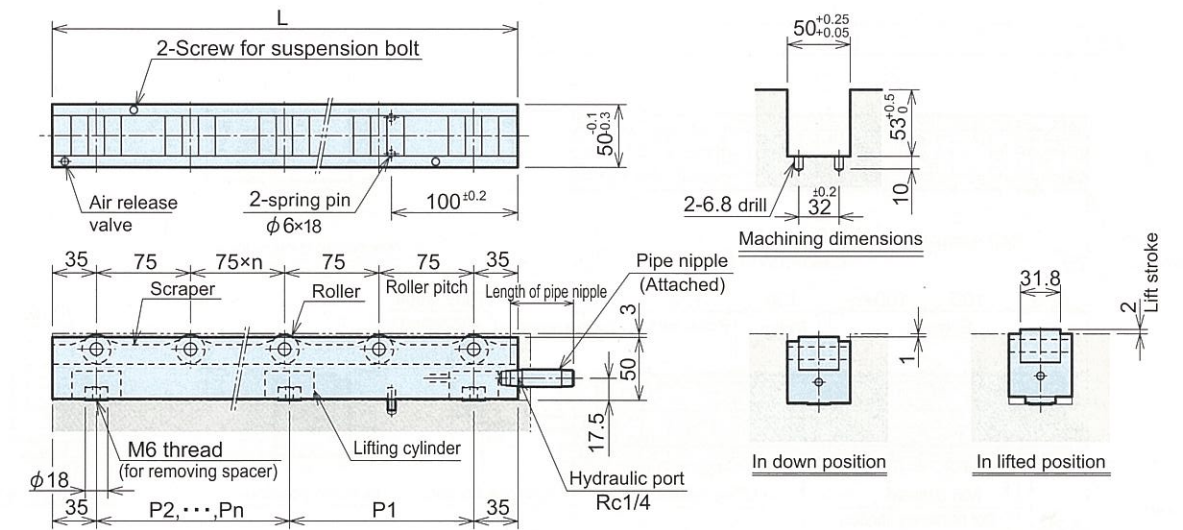
Model	Total length of die lifter L (mm)	Roller qty	Allowable die weight (kg)*1		Lifting cylinder		Lifting cylinder pitch (mm)									
			SS400	S45C	Number	Lifting force (kN)	P1	P2	P3	P4	P5	P6	P7			
RA0500-195	195	2	400	700			75									
RA0500-270	270	3	600	1050			150									
RA0500-345	345	4	800	1400	2	22.2	225									
RA0500-420	420	5	1000	1750			300									
RA0500-495	495	6	1200	2100			375									
RA0500-570	570	7	1400	2450			225	225								
RA0500-645	645	8	1600	2800	3	33.3	262.5	262.5								
RA0500-720	720	9	1800	3150			300	300								
RA0500-795	795	10	2000	3500			225	225	225							
RA0500-870	870	11	2200	3850	4	44.4	250	250	250							
RA0500-945	945	12	2400	4200			275	275	275							
RA0500-1020	1020	13	2600	4550			225	225	225	225						
RA0500-1095	1095	14	2800	4900			240	247.5	247.5	240						
RA0500-1170	1170	15	3000	5250	5	55.5	262.5	262.5	262.5	262.5						
RA0500-1245	1245	16	3200	5600			280	282.5	282.5	280						
RA0500-1320	1320	17	3400	5950			240	240	240	240	240					
RA0500-1395	1395	18	3600	6300	6	66.6	255	255	255	255	255					
RA0500-1470	1470	19	3800	6650			270	270	270	270	270					
RA0500-1545	1545	20	4000	7000			237.5	237.5	237.5	237.5	237.5					
RA0500-1620	1620	21	4200	7350	7	77.7	250	250	250	250	250	250				
RA0500-1695	1695	22	4400	7700			262.5	262.5	262.5	262.5	262.5	262.5				
RA0500-1770	1770	23	4600	8050	8	88.8	235	236	236	236	236	236	235			
RA0500-1845	1845	24	4800	8400			245	247	247	247	247	247	245			

### Remarks

\*1. The allowable die weight is for when the die rests on all the flat rollers.  
For crowned rollers (option J) calculate allowable weight from the values shown in the specifications table.

## Outline Dimensions

● RA0500-□-G



## Dimensions

Model	Total length of die lifter L (mm)	Roller qty	Allowable die weight (kg)*1		Lifting cylinder		Lifting cylinder pitch (mm)									
			SS400	S45C	Number	Lifting force (kN)	P1	P2	P3	P4	P5	P6	P7			
RA0500-145-G	145	2	400	700			75									
RA0500-220-G	220	3	600	1050			150									
RA0500-295-G	295	4	800	1400	2	22.2	225									
RA0500-370-G	370	5	1000	1750			300									
RA0500-445-G	445	6	1200	2100			375									
RA0500-520-G	520	7	1400	2450			225	225								
RA0500-595-G	595	8	1600	2800	3	33.3	262.5	262.5								
RA0500-670-G	670	9	1800	3150			300	300								
RA0500-745-G	745	10	2000	3500			225	225	225							
RA0500-820-G	820	11	2200	3850	4	44.4	250	250	250							
RA0500-895-G	895	12	2400	4200			275	275	275							
RA0500-970-G	970	13	2600	4550			225	225	225	225						
RA0500-1045-G	1045	14	2800	4900			240	247.5	247.5	240						
RA0500-1120-G	1120	15	3000	5250	5	55.5	262.5	262.5	262.5	262.5						
RA0500-1195-G	1195	16	3200	5600			280	282.5	282.5	280						
RA0500-1270-G	1270	17	3400	5950			240	240	240	240	240					
RA0500-1345-G	1345	18	3600	6300	6	66.6	255	255	255	255	255					
RA0500-1420-G	1420	19	3800	6650			270	270	270	270	270					
RA0500-1495-G	1495	20	4000	7000			237.5	237.5	237.5	237.5	237.5					
RA0500-1570-G	1570	21	4200	7350	7	77.7	250	250	250	250	250	250				
RA0500-1645-G	1645	22	4400	7700			262.5	262.5	262.5	262.5	262.5	262.5				
RA0500-1720-G	1720	23	4600	8050	8	88.8	235	236	236	236	236	236	235			
RA0500-1795-G	1795	24	4800	8400			245	247	247	247	247	247	245			

### Remarks

\*1. The allowable die weight is for when the die rests on all the flat rollers.  
For crowned rollers (option J) calculate allowable weight from the values shown in the specifications table.