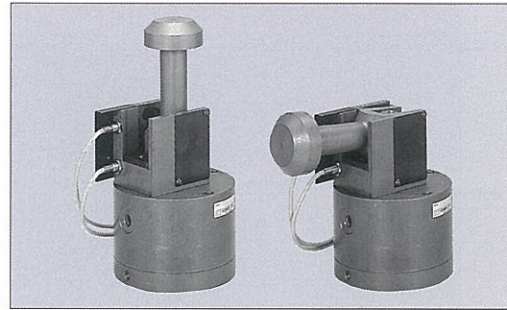


# MODEL GN CLAMP



## MODEL CODE

GN 063 0 - 35 - 5 - V

① Design No.    ②    ③    ④

NON STOCKING ITEM

## SPECIFICATIONS

Model	GN0250	GN0400	GN0630	GN1000
Clamping Force (kN)	24.5	39.2	61.7	98
Working Pressure (MPa)	24.5 (for rated clamp force)			
Max Working Pressure (MPa)	27.0			
Max Rated Pressure (MPa)	36.8			
Swing Angle	90°			
Full Stroke (mm)	6	7.5	10	12
Clamp Stroke (mm)	4	5	7	9
Extra Stroke (mm)	2	2.5	3	
Cylinder	Lock (cm³)	18.6	36	73.9
	Capacity Release (cm³)	27.4	53.5	115.5
Swing Air Pressure (MPa)	0.39 - 0.49			
Switch Voltage	AC100V / AC200V / DC24V			
Working Temperature	0 - 70°C (V type is available for 70 - 120°C)			
Frequency of Use	20 times/day (please contact us for more frequent use.)			
Working Fluid	ISO - VG - 32 or equivalent			

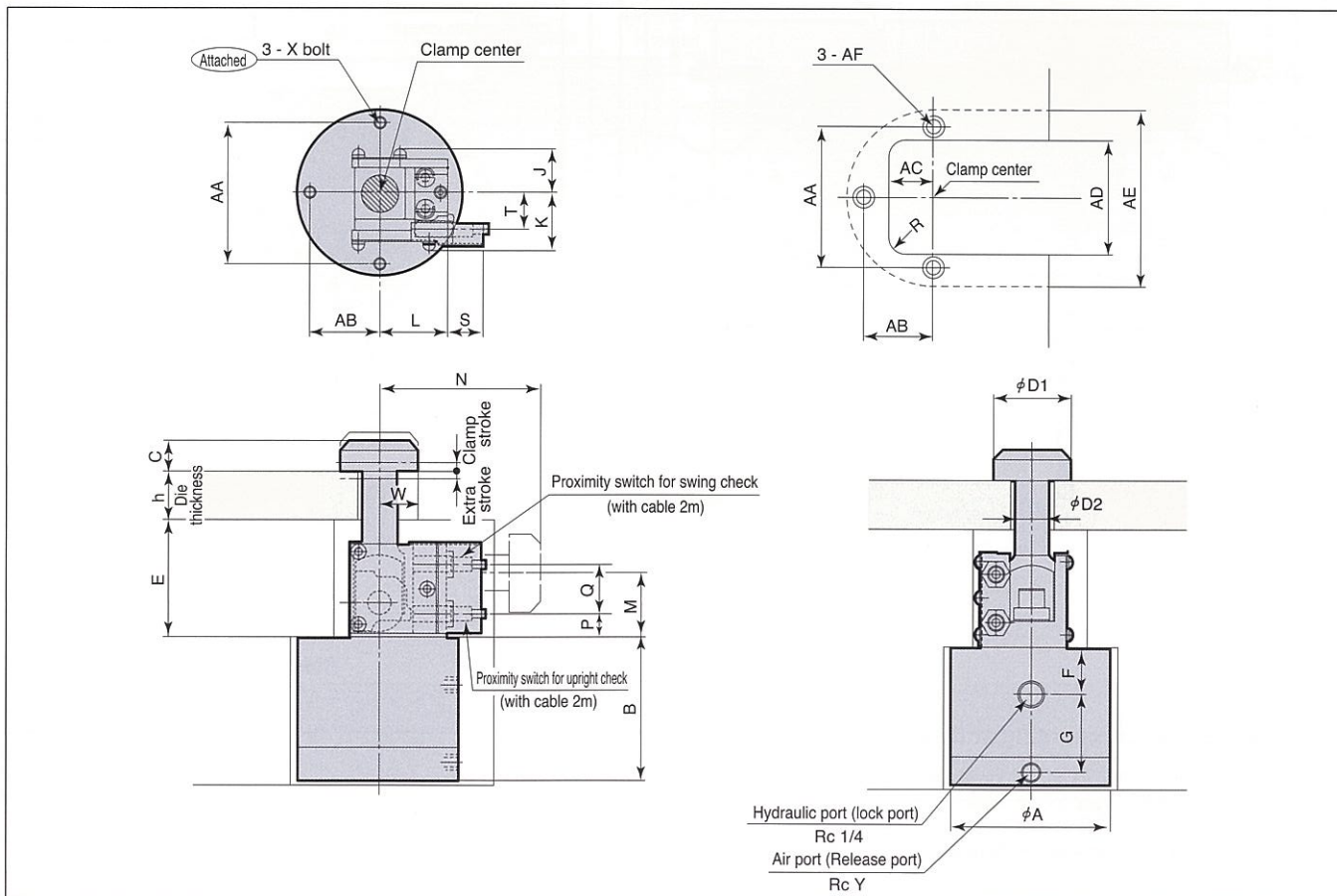
- ① Capacity (See specifications)
  - ② Mold thickness (h dimension)\*1  
25 : h dimension 25 mm  
50 : h dimension 50 mm
  - ③ Switch load voltage (current)  
1 : AC100V  
2 : AC200V  
5 : DC 24V (5 - 40 mA)
  - ④ Options  
N : Piping port with NPT\*1  
V : For high temperature (70 - 120°C)
- \*1When "N" is selected from options, each dimension is described in "inch" in the specifications and other documents. However the die thickness is shown by mm value as a symbol.

e.g. GN0630-40-2  
 • Clamp capacity 61.7 kN  
 • Clamp height 40 mm  
 • AC200V

**NOTE** All types shall be produced after an order received. If you place an order, ask delivery time in advance.

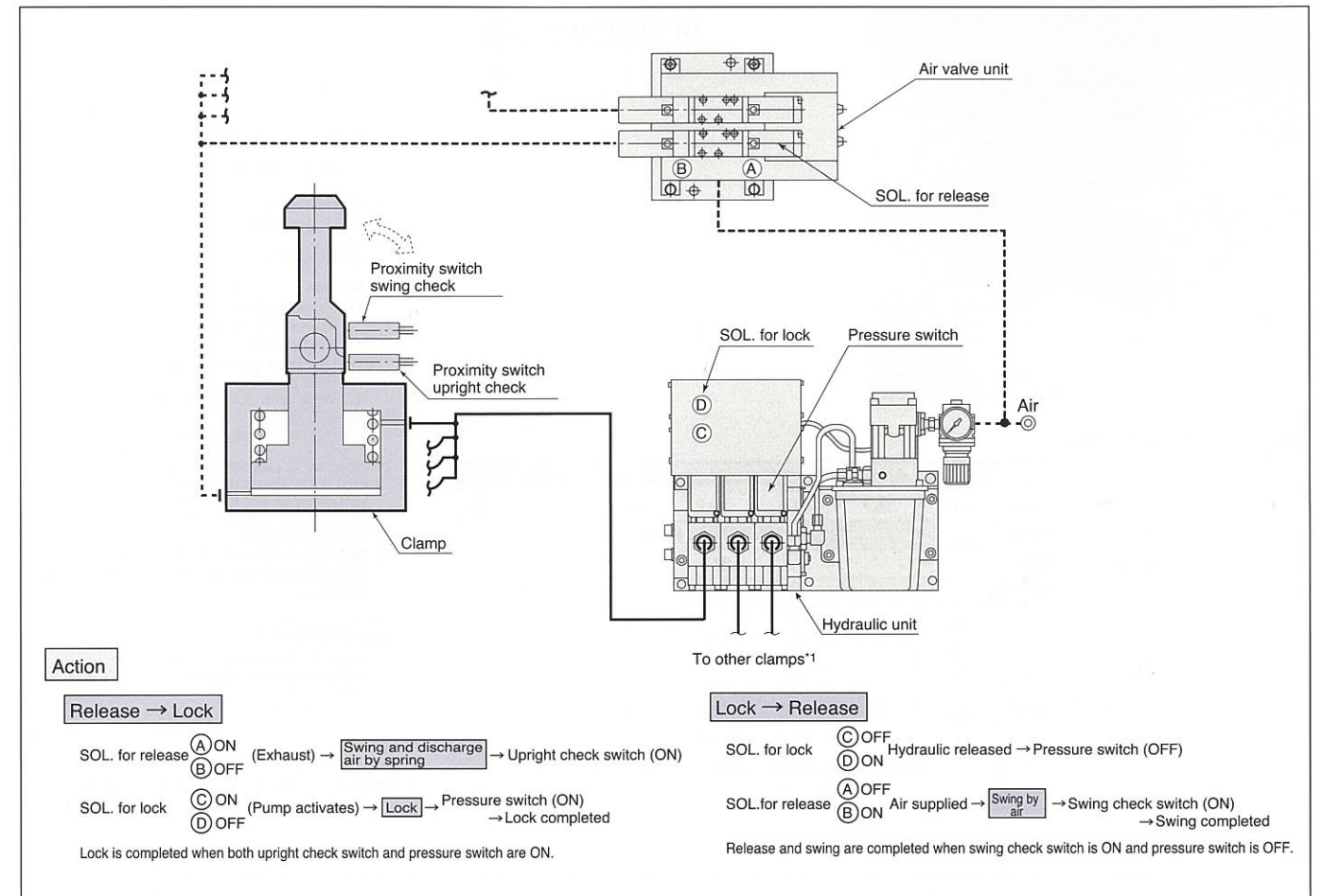
\*Pressure lower than 0.39 MPa may cause malfunction.

## OUTLINE DIMENSIONS



Clamp rod of the GN clamp swings to avoid interfering with the die when loading or unloading the lower die.

## TYPICAL LAYOUT



## OUTLINE DIMENSIONS

Model	GN0250	GN0400	GN0630	GN1000
A	83	102	122	142
B	71.5	77	90.5	111
C	16	20	25	35
D1	40	50	60	75
D2	18	22	28	34
E	60	75	90	115
F	24	25	26.5	30
G	40	44.5	54	70
J	22.5	26	32.5	40
K	28.5	32	38.5	49
L	35	42	49	60
M	33.5	41	53	67
N	h+58.5	h+74	h+89	h+118
P	16.5	20	24	31
Q	21	26	34	39
S	18	22	24	17
T	18	21	26.5	35
h	min.25 - max.50			
W	20	25	30	37.5
AA	72	86	106	126
AB	36	43	53	63
AC	23	27	35	40
AD	58	67	84	104
AE	90	110	130	150
AF	7 Drill hole Spot facing #11 Depth 7		9 Drill hole Spot facing #14 Depth 9	
R	10	12.5	15	17.5
X	M6		M8	
Y	Rc 1/8		Rc 1/4	
Provided bolts	M6×60 (3pcs)	M8×75 (3pcs)	M8×90 (3pcs)	M8×115 (3pcs)

\*1. Specify clamping height (h) when ordering.  
 \*2. For specifications other than above, consult us.

Note) \*1. Although the GN Clamp is a hydraulic single action clamp, the unit circuit of the clamp is the U circuit because the clamp is controlled by double solenoids. When using the GN Clamp combining with other single action clamps, the clamp circuit should be the G circuit. When using the GN Clamp combining with the MRA rollers, the circuit should be the H circuit. Contact us for further information.

### Precautions for mounting and operation

1. Allowance of die clamping thickness is  $h \pm 0.5\text{mm}$ .
2. Clamp surface must be parallel with clamp mounting surface.
3. Hydraulic pressure for lock should be 24.5 MPa, and pneumatic pressure for release should be 0.39~0.49MPa.
4. Take care to prevent dust, sand, chips, slugs, etc. from entering clamp mechanism.
5. This clamp is not applicable to the upper die (swing rod downward).