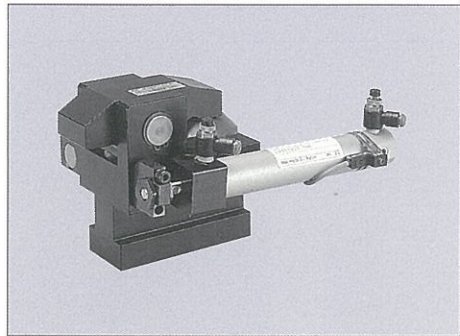


MODEL GE CLAMP



MODEL CODE

GE 040 1 - 125 - 1 L - E - T ***

① Design No. ② ③ ④ ⑤

This number represents the main specification of the clamp's T-slot stem and the clamping height. After the specification is confirmed, we will create a number.

- ① Capacity (See specifications)
- ② Slide stroke (See outline dimension)*2
75: Clamp travel distance 75 mm
180: Clamp travel distance 180 mm
*When determining the travel distance, extra distance must be considered.
- ③ Air cylinder load voltage (current)
1: AC100V
2: AC200V
5: DC24V(5 - 40 mA)
- ④ Switch mounting position
L: As illustrated
R: Reverse of illustration
- ⑤ Options
E: Reinforced body material
H: High type (Rod material to be manufactured after an order placed)
J: Low type lever (when lower than minimum height)
K: Rear side piping
L: Wide lever (for U cut mold)*1
N: Piping port with NPT*2
Q: Double cylinder
S: Special spacer
V: For high temperature (70 - 120°C)
Y: For diecast machine

- *1 Always specify U cut dimension of the mold.
- *2 When "N" is selected from options, each dimension is described in "inch" in the specification and other documents. However the slide stroke is shown by mm value as a symbol.

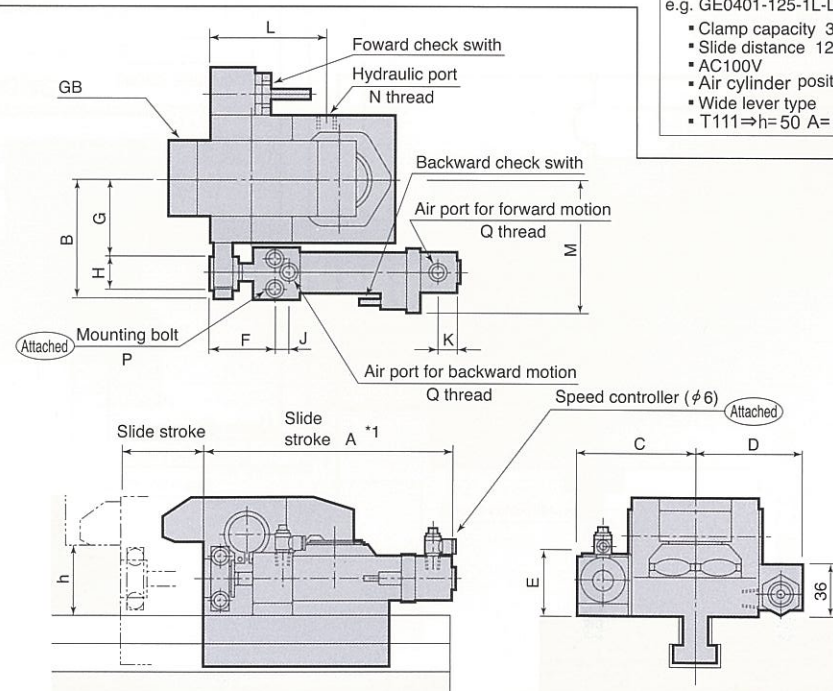
e.g. GE0401-125-1L-L-T111
 • Clamp capacity 39.2 kN
 • Slide distance 125 mm
 • AC100V
 • Air cylinder position as illustrated
 • Wide lever type
 • T111⇒h=50 A=20.5 B=35 C=14 D=22.7

SPECIFICATIONS

Model	GE0251	GE0401	GE0631	GE1001	GE1601	GE2501
Clamping Force (kN)	24.5	39.2	61.7	98	157	245
Working Pressure (MPa)	24.5 (for rated clamp force)					
Max Working Pressure (MPa)	27.0					
Max Rated Pressure (MPa)	36.8					
Slide Stroke*1 (mm)	25 - 200	50 - 200	50 - 300			
Driving Air Pressure*2 (MPa)	0.39 - 0.49					
Switch Voltage	AC100V / AC200V / DC24V					
Working Temperature	0 - 70°C (V type is available for 70 - 120°C)					
Frequency of Use	20times/day (please contact us for more frequent use.)					
Working Fluid	ISO - VG - 32 or equivalent					

*1. If the stroke exceeds the value shown in the specifications, contact us because the dimension "A" in the outline drawing is different.
 *2. Air pressure less than 0.39 MPa may result in malfunction.

OUTLINE DIMENSIONS



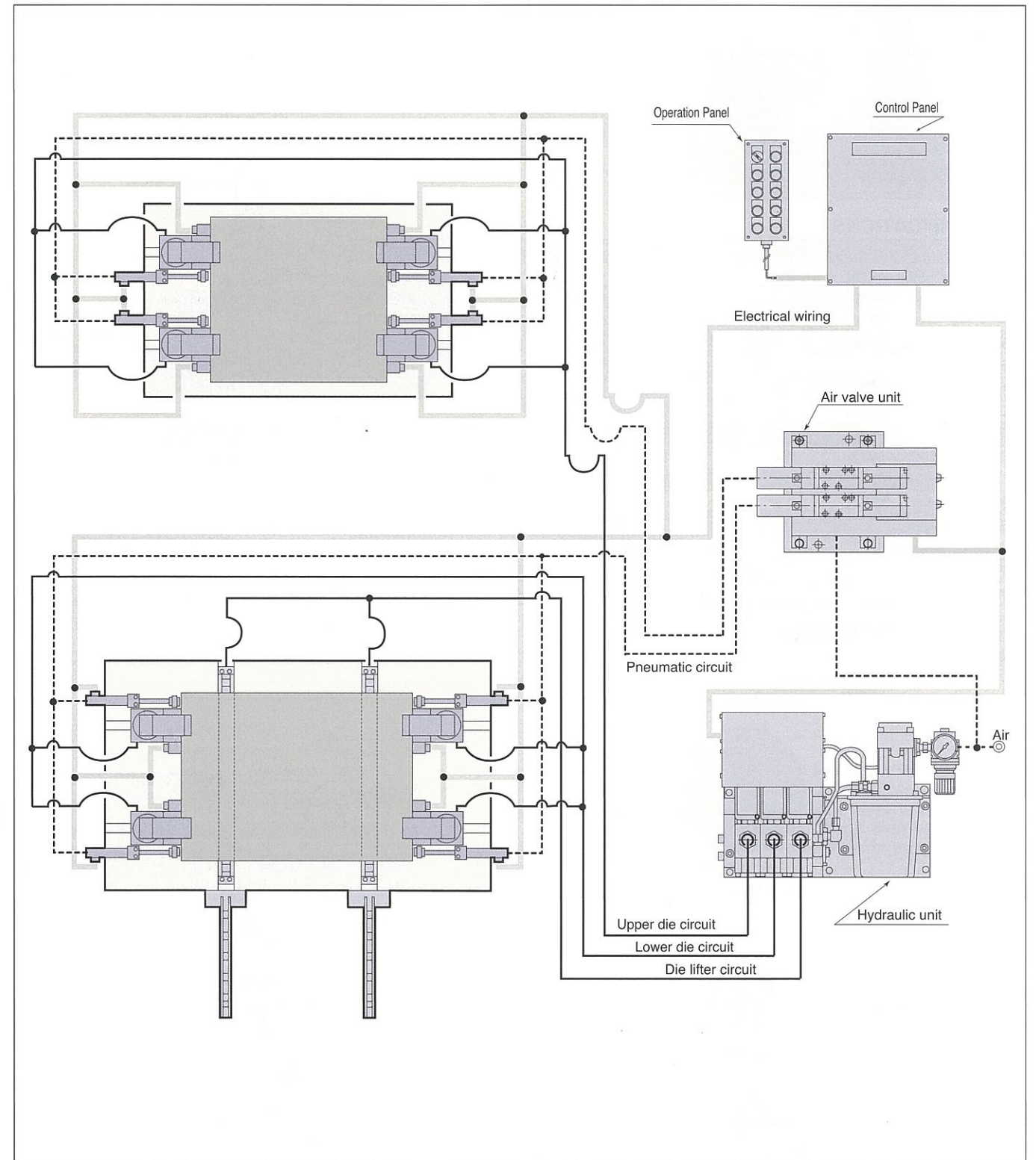
OUTLINE DIMENSIONS

Model	GB Model	A	B	C	D	E	F	G	H	J	K	L	M	N	P		Q	R
															Mounting bolt	Tapping		
GE0251	GB0250	105	60	63.5	59	37	39	39	18	9	12	73	75.5	Rc1/8	M5 × 0.8 × 40	M5 × 0.8 Depth 10	Rc1/8	φ6
GE0401	GB0400	105	65	68.5	64	37	39	44	18	9	12	93	80.5	Rc1/4	M5 × 0.8 × 40	M5 × 0.8 Depth 10		
GE0631	GB0630	112	81.5	84.5	74	48	45	55	22	10	12	81	96		Rc1/4	M6 × 50	M6 × Depth 12	
GE1001	GB1000	118	92.5	94.5	78.5	54	46	61	24	13	12	91	106.5	Rc1/4		M8 × 55	M8 × Depth 16	
GE1601	GB1600	136	112	116.5	88.5	65	56	74	32	14	12	126	128		Rc1/4	M10 × 70	M10 × Depth 20	
GE2501	GB2500	157	137	142	102	78	64	89	41	16	14	170.5	153	Rc1/4		M12 × 85	M12 × Depth 24	

Note) Refer to GB clamp (p5) for clamp details.

GE is a GB clamp with air cylinder for automatic positioning. It is used for inaccessible areas at far side of operation.

TYPICAL LAYOUT



Precautions for mounting and operation

1. Adjust speed controllers so that travel is completed within 2 - 3 seconds.
2. Proximity switch is used for die detection. Each die must have a clear target for the switch.
3. When determining slide stroke, provide the forward end with an extra stroke between 2 and 5 mm considering dimensional accuracy of the air cylinder and detection distance of the proximity switch.
4. Sliding surfaces should be smooth.