

# MODEL GD CLAMP



## MODEL CODE

GD 040 0 - 75 - 5 R - H - T \* \* \*

① Design NO. ② ③ ④ ⑤

This number represents the main specification of the clamp's T-slot stem and the clamping height. After the specification is confirmed, we will create a number.

- ① Capacity (See specifications)
- ② Slide stroke (See outline dimension)\*1  
75 : Clamp travel distance 75 mm  
125 : Clamp travel distance 125 mm  
\*When determining the travel distance, extra distance must be considered.
- ③ Switch voltage (current)  
1 : AC100V  
2 : AC200V  
5 : DC 24V (5 - 40 mA)
- ④ Switch mounting position  
L : As illustrated  
R : Reverse of illustration
- ⑤ Options  
H : Extraheight type (Rod material to be manufactured after an order placed)  
S1 : Long stroke 12.5 mm  
S2 : Long stroke 20mm  
N : Piping port with NPT \*1  
V : For high temperature (70 - 120 °C)

\*1 When "N" is selected from Options, each dimension is described in "inch" in the specifications and other documents. However the slide stroke is shown by mm value as a symbol.

e.g. GD0400-100-5R-H-T111  
 • Clamp capacity 39.2 kN  
 • Slide distance 100 mm  
 • DC24V  
 • Switch position as illustrated  
 • Extra height type  
 • T111 ⇒ h=50 A=20.5 B=36 C=19 d=60

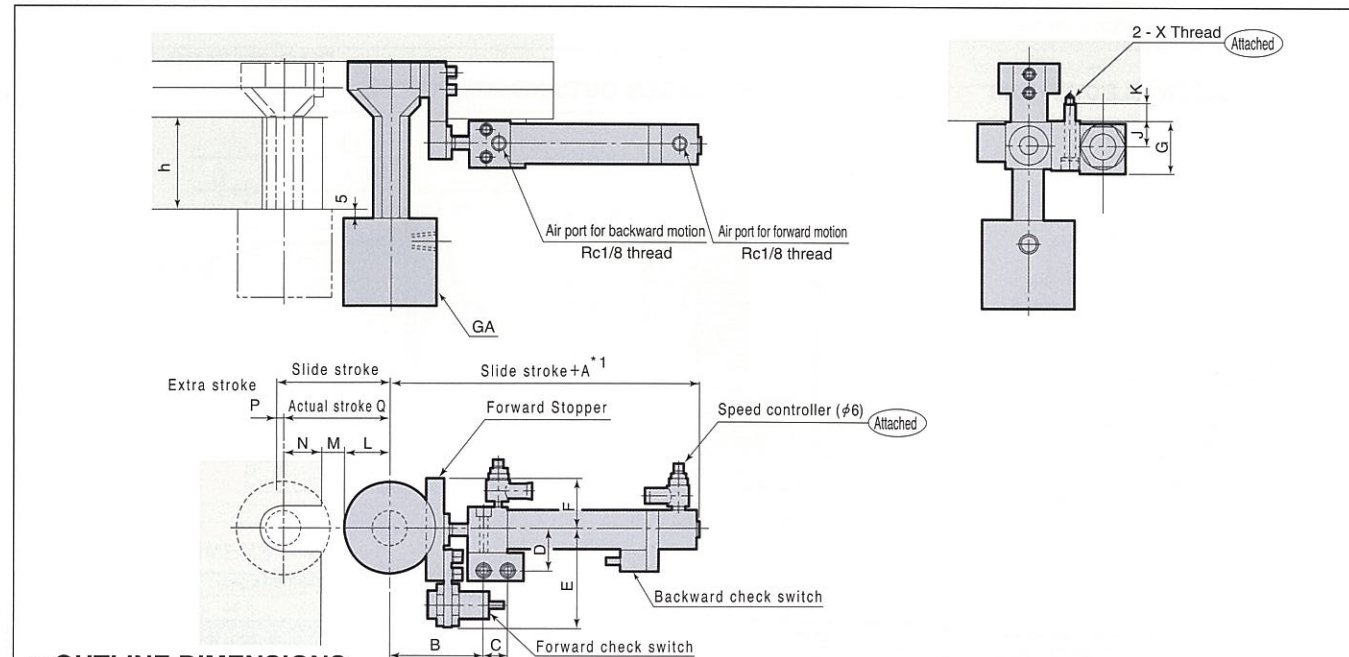
## SPECIFICATIONS

Model	GD0250	GD0400	GD0630	GD1000	GD1600
Clamping Force (kN)	24.5	39.2	61.7	98	157
Working Pressure (MPa)	24.5 (for rated clamp force)				
Max Working Pressure (MPa)	27.0				
Max Rated Pressure (MPa)	36.8				
Slide Stroke*1 (mm)	75 - 150	100 - 150	100 - 200	125 - 200	
Driving Air Pressure*2 (MPa)	0.39 - 0.49				
Switch Voltage	AC100V / AC200V / DC24V				
Working Temperature	0 - 70°C (V type is available for 70 - 120°C)				
Frequency of Use	20 times/day (please contact us for more frequent use.)				
Working Fluid	ISO - VG - 32or equivalent fluid				

\*1. If the stroke exceeds the value shown in the specifications, contact us because the dimension "A" in the outline drawing is different.

\*2. Air pressure less than 0.39 MPa may result in malfunction.

## OUTLINE DIMENSIONS



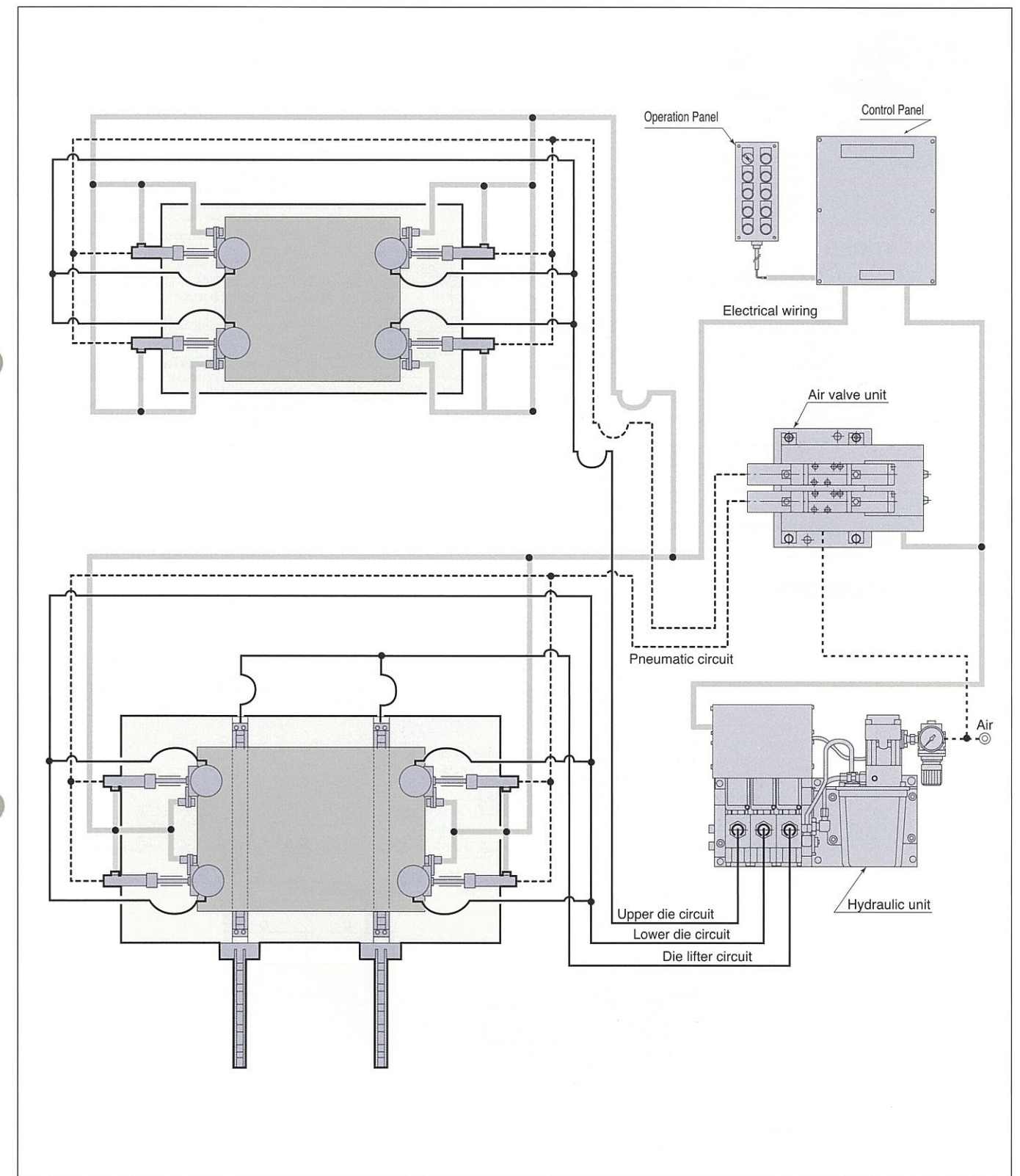
## OUTLINE DIMENSIONS

Model	GA Model	A	B	C	D	E	F	G	J	K	X	MIN.h	Standard Stroke(Semi standard)	L	M	N	P	Q
GD0250	GA0250	124.5	58.5	16	27	64	34	34	16	12	M6	35	75 (100,125,150)	26.5	14	20	14.5	60.5
GD0400	GA0400	129.5	63.5	16	27	64	34	34	16	12	M6	35	75 (100,125,150)	31	14	25	5	70
GD0630	GA0630	134.5	68.5	16	27	64	34	34	16	12	M6	35	100 (125,150)	39	16	30	15	85
GD1000	GA1000	141.5	74.5	20	35	73	43	38	16	16	M8	40	100 (125,150,200)	49	16	30	5	95
GD1600	GA1600	146.5	79.5	20	35	73	43	38	16	16	M8	40	125 (150,200)	63	17	35	10	115

Note) Refer to GA CLAMP (p3) for clamp details.

GD is a GA type clamp with air cylinder for automatic positioning. It is used for inaccessible areas or at far side of operation.

## TYPICAL LAYOUT



## Precautions for mounting and operation

1. Adjust speed controllers so that travel is completed within 2 - 3 seconds.
2. Proximity switch is used for die detections. Each die must have a clear target for the switch.
3. Sliding surfaces should be smooth.