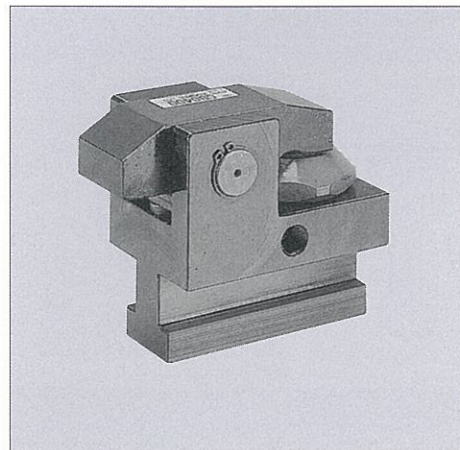


# MODEL GB CLAMP



## MODEL CODE

GB 063 0 - KLP - 5 L - T \* \* \*

① Design No.

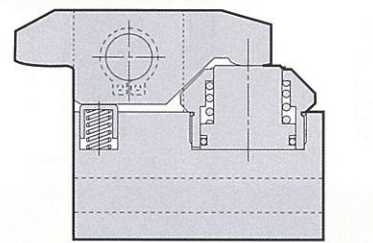
②

③

④

This number represents the main specification of the clamp's T-slot stem and the clamping height. After the specification is confirmed, we will create a number.

## CUTAWAY VIEW



① Capacity (See specifications)

② Options

- A : Slide rod type (U-cut)
- B : Slide rod type (Tap)
- D : With handle (0630 and larger)
- E : Reinforced body (to be manufactured after receiving an order.)
- H : Extra height type (Body, material to be manufactured after receiving an order)
- J : Low lever type (less than min "h")
- K : Rear port type
- L : Wide lever type (for U-cut in die)\*1
- N : NPT port
- P : With proximity switch for die detection (0400 and larger)\*2
- T : T-slot lock type
- V : High temperature type (70 - 120°C)
- W : With check valve (1000 and larger)
- Y : For diecast machine

\*1 Always specify U cut dimension of the mold.

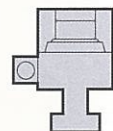
\*2 The following code is required only when "P" is selected from Options.

③ Switch load voltage (current)

- 1 : AC100V
- 2 : AC200V
- 5 : DC 24V (5 - 40mA)

④ Switch mounting position

- L : As illustrated
- R : Reverse of illustration



e.g. GB0630-DP-1R-T111

- Clamp capacity 61.7kN
- with handle
- with proximity switch for die detection AC100V
- Switch position is right side when viewed from rear
- T111⇒h=50 A=20.5 B=35 C=14 D=22.7

\*1. For other fluids, consult us.

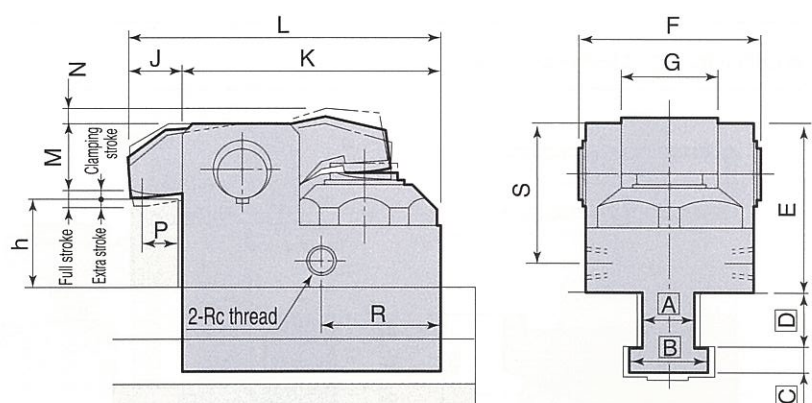
\*2. If fluid viscosity is higher, action will be slower.

\*3. Action at low temperature will be slower as fluid viscosity is higher.

## SPECIFICATIONS

Model	GB0100	GB0160	GB0250	GB0400	GB0630	GB1000	GB1600	GB2500
Clamping Force (kN)	9.8	15.7	24.5	39.2	61.7	98	157	245
Working Pressure (MPa)	24.5 (for rated clamp force)							
Max Working Pressure (MPa)	27.0							
Max Rated Pressure (MPa)	36.8							
Full Stroke (mm)	6	7				8		
Clamping Stroke (mm)	3	3.5				4		
Extra Stroke (mm)	3	3.5				4		
Cylinder Cap at Full Stroke (cm <sup>3</sup> )	2.5	4.8	7.2	11.9	21.6	34.7	55.2	85.9
Working Temperature	0 - 70°C (V type is available for 70 - 120°C)							
Frequency of use	20 times/day (please contact us for more frequent use.)							
Working Fluid	ISO - VG - 32 or equivalent							
Min T-slot dimension "a" (JIS) (mm)	10	12	14	18	22	24	28	36
Max T-slot dimension "a" (JIS) (mm)	20	24	32	42	42		54	

## OUTLINE DIMENSIONS



## OUTLINE DIMENSIONS

Model	MIN.E	F	G	J	K	L	M (h)	MAX.N	P	R	S	Rc	MIN.C	MAX.h	
GB0100	44.5	43	20	15	58	73	16.5 (25-)	21.5 (20-25)	5.5	10	33	34.5	1/8	6.5	40
GB0160	51	53	26	18	70	88	17.5 (30-)	22.5 (25-30)	6.5	12.5	37	41	1/8	8	40
GB0250	59	63	32	20	84	104	21.5 (34-)	26.5 (29-34)	6.5	14	43.5	47	1/4	9.5	50
GB0400	67.5	73	40	23	105.5	128.5	29.5 (35-)	34.5 (30-35)	6.5	16	51.5	56	1/4	12	50
GB0630	81	93	50	30	130	160	28.5 (47.5-)	39.5 (37.5-47.5)	8	20	49	69	1/4	14	60
GB1000	108	103	55	30	159	189	44 (60-)	54 (50-60)	8	20	68	95	1/4	16.5	70
GB1600	130	124	60	30	199	229	61 (65-)	71 (55-65)	9	20	73	116	1/4	20	80
GB2500	152	152	73	30	240	270	78 (70-)	88 (80-70)	9.5	20	69.5	135	1/4	23	80

\*1. Clamping strokes and extra strokes shown are standard; Custom strokes are available upon request.

\*2. Dimensions [A], [B], [C] and [D] are determined from T-slot dimensions.

\*3. Specify T-slot dimensions (a,b,c,d) and clamping height (h) when ordering.

\*4. Specify (d) and (h) within 0.1mm

\*5. Clamps with a dimension greater than MAX h are optionally available (H type).

GB type is universal, and requires only a flat ledge on the die.

A / B	D	H	J	K	L
A.Slide rod type: U-slot B.Slide rod type: tap	With handle (0630 and larger)	Extra height type (h greater than std.)	Low lever (less than min h)	Rear port type	Wide lever type
N	P	T	V	W	E
NPT port	With proximity switch for die detection (0400 and larger)	T-slot lock type	High temperature type (70 - 120°C)	With check valve (1000 and larger)	Reinforced body
					For undersize or large tolerance T-slot.

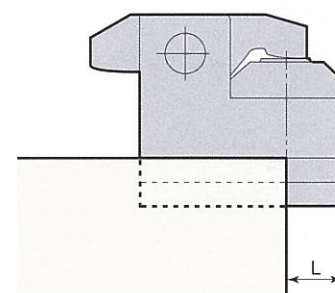
## Precautions for mounting and operation

1. Working pressure should be 24.5 MPa.

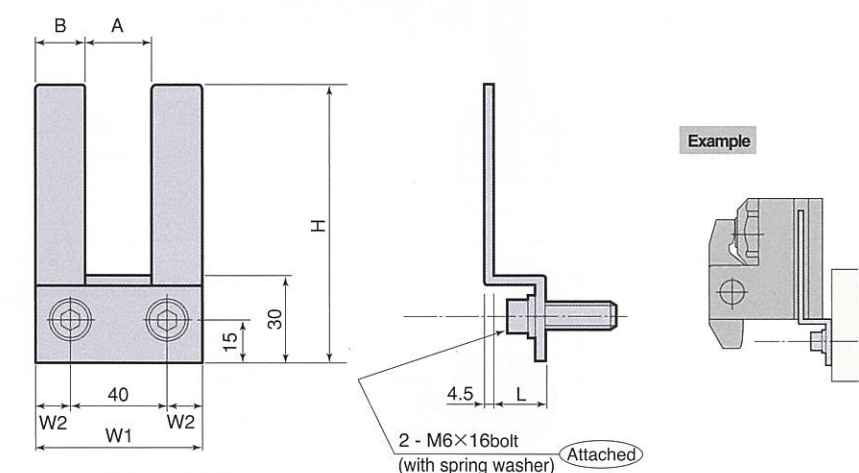
3. Never allow clamp overhang to exceed L (shown below).

2. T-slot and clamp surface must be parallel. Otherwise, the clamp may sustain damage.

## GB CLAMP: ALLOWABLE OVERHANG



## OPTION: CLAMP HANGER OUTLINE DIMENSIONS



Model	L (mm)
GB0100	17.5
GB0160	21.0
GB0250	25.0
GB0400	32.0
GB0630	39.0
GB1000	45.0
GB1600	57.0
GB2500	69.5

Model	GBH181	GBH221	GBH281
A	18	22	28
B	21	19	21
H		100	110
W1		60	70
W2		10	15
L		19	25

Note) Don't operate the press while clamps are on hangers. (Clamp hangers should be used only during die change.)