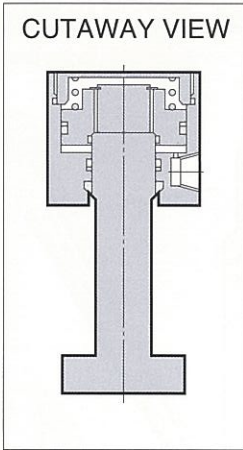


MODEL GA CLAMP



MODEL CODE

GA 063 0 - HPV - 5 L T***

① Design No.

This number represents the main specification of the clamp's T-slot stem and the clamping height. After the specification is confirmed, we will create a number.

① Capacity (See specifications)

② Options

- A : Slide rod type (U-cut)
- B : Slide rod type (tap)
- F1 : Fixed type (Embedded type 0250 - 1000)
- F2 : Fixed type (Flange type)
- H : Extra height type (Rod material to be manufactured after receiving an order.)
- P : With proximity switch for die detection (0400 and larger)
- S1 : Long stroke 12.5 mm
- S2 : Long stroke 20 mm
- T : T-slot lock type
- N : NPT port type
- V : High temperature type (70 - 120 °C)

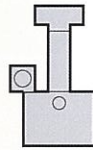
*Following designations are required for "P" type.

③ Switch load voltage (current)

- 1 : AC100V
- 2 : AC200V
- 5 : DC 24V (5 - 40 mA)

④ Switch mounting position

- L : As illustrated
- R : Reverse of illustration



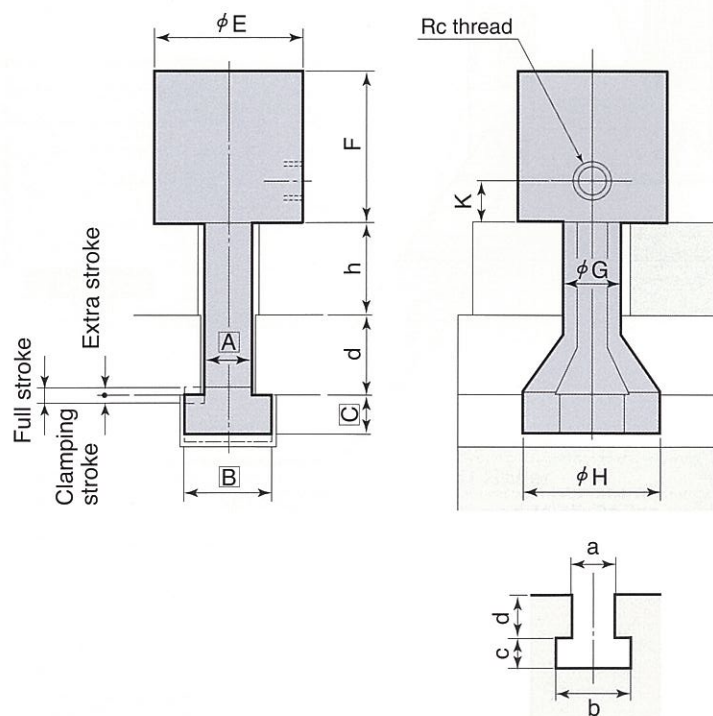
e.g. GA0400-HV-T11
 • Clamp capacity 39.2 kN
 • Extra height type
 • High temperature type
 • T11 ⇒ h=50 A=20.5 B=36 C=19 d=60

- *1. For other fluids, consult us.
- *2. If fluid viscosity is higher, action will be slower.
- *3. Action at low temperature will be slower as fluid viscosity is higher.

SPECIFICATIONS

Model	GA0100	GA0160	GA0250	GA0400	GA0630	GA1000	GA1600	GA2500
Clamping Force (kN)	9.8	15.7	24.5	39.2	61.7	98	157	245
Working Pressure (MPa)	24.5 (for rated clamp force)							
Max Working Pressure (MPa)	27.0							
Max Rated Pressure (MPa)	36.8							
Full Stroke (mm)	6			8				
Clamping Stroke (mm)	4			5				
Extra Stroke (mm)	2			3				
Cylinder Cap at Full Stroke (cm ³)	2.5	5.7	8	13	21	31	54	76
Working Temperature	0 - 70°C (V type is available for 70°C - 120°C)							
Frequency of Use	20 times/day (please contact us for more frequent use.)							
Working Fluid	ISO - VG - 32 or equivalent							
Min T-slot Dimension "a" (JIS) (mm)	8	10	12	16	18	22	28	36
Max T-slot Dimension "a" (JIS) (mm)	20	24	32	42	42		54	

OUTLINE DIMENSIONS



OUTLINE DIMENSIONS

Model	E	F	G	H	K	MIN.C	Rc	MAX.h+d
GA0100	40	39	12	30	10	5	1/8	60
GA0160	43	48	15	38	12	6	1/8	70
GA0250	53	52	18.5	48	12	7	1/4	80
GA0400	62	58	23.5	58	15	9.5	1/4	90
GA0630	78	65	28.5	68	15	11	1/4	100
GA1000	98	71	38.5	78	15	15	1/4	110
GA1600	126	82	48.5	88	15	19	1/4	120
GA2500	150	100	58.5	98	15	24	1/4	140

- *1. Clamping strokes and extra strokes shown are standard; Custom strokes are available upon request.
- *2. Dimensions [A], [B] and [C] are determined from T-slot dimensions.
- *3. Specify T-slot dimensions (a,b,c,d) and clamping height (h) when ordering.
- *4. Clamps with a dimension greater than MAX h+d are optionally available (H type).

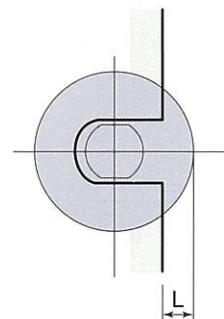
GA type is space efficient and locks in the U-slot of the die.

A / B	F 1	F 2	H	N
Slide rod type : U-slot Slide rod type : tap	Fixed type : Embedded type (0250 - 1000)	Fixed type : Flange type	Extra height type	NPT port type
P	S 1	S 2	T	V
Proximity switch for die detection (0400 and larger)	Long stroke : 12.5 mm	Long stroke : 20 mm	T-slot lock type	High temperature type 70°C - 120°C

Precautions for mounting and operation

- 1. Working pressure should be 24.5 MPa.
- 2. T-slot and clamp surface must be parallel, otherwise the clamp may deform and cause oil leakage.
- 3. Never allow clamp overhang to exceed L (shown below)

GA CLAMP : ALLOWABLE OVERHANG



Model	L (mm)
GA0100	13
GA0160	14
GA0250	17
GA0400	20
GA0630	26
GA1000	32
GA1600	42
GA2500	50

OPTION : CLAMP HANGER

Model	Dimension			Applicable model	
	A	L	T	T-slot "a"	Clamp Model
GAH221	22	125	3.2	20 - 22	GA0160 - 1000
GAH281	28	125	3.2	24 - 28	GA0250 - 1000

Note) 1. Don't operate the press while clamps are on hangers. (Clamp hangers should be used only during die change.)